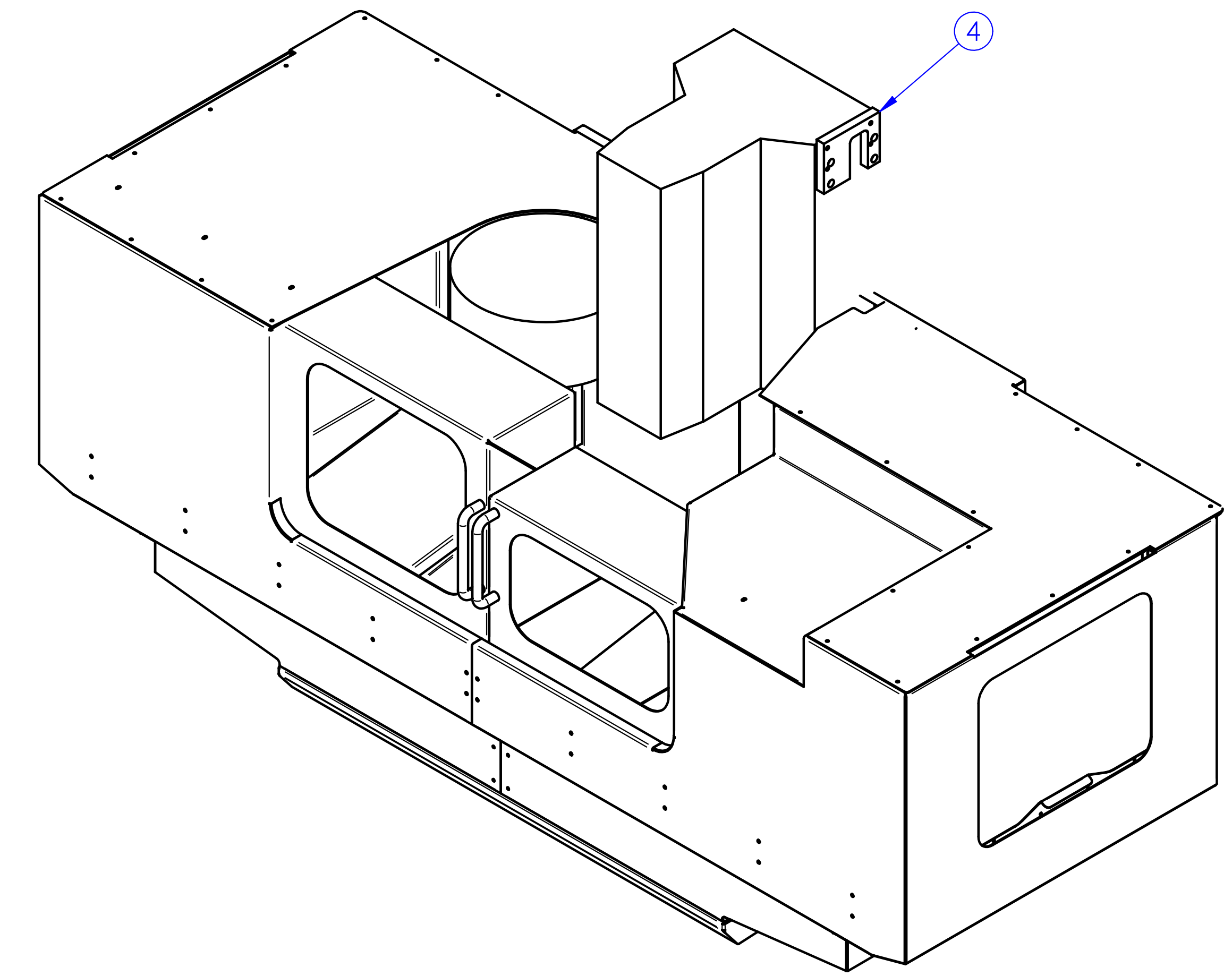
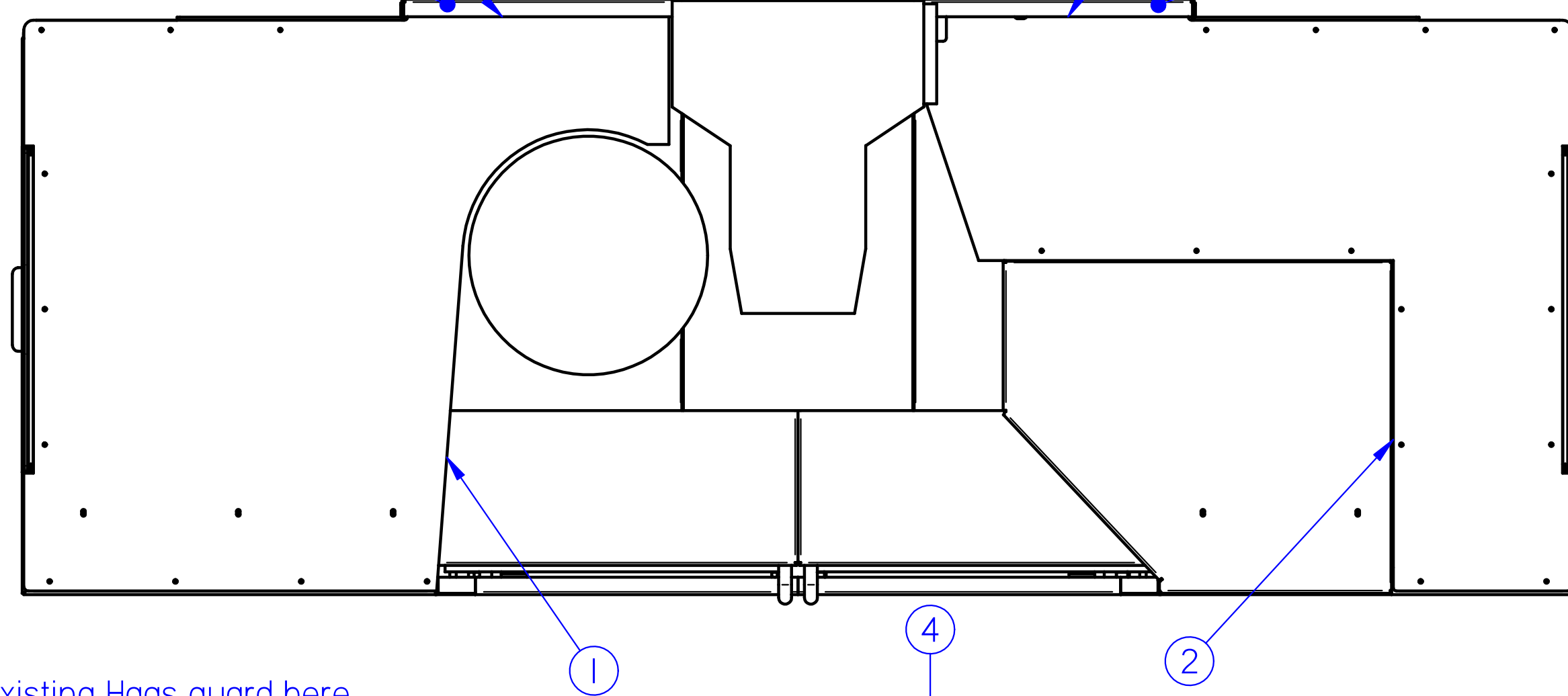
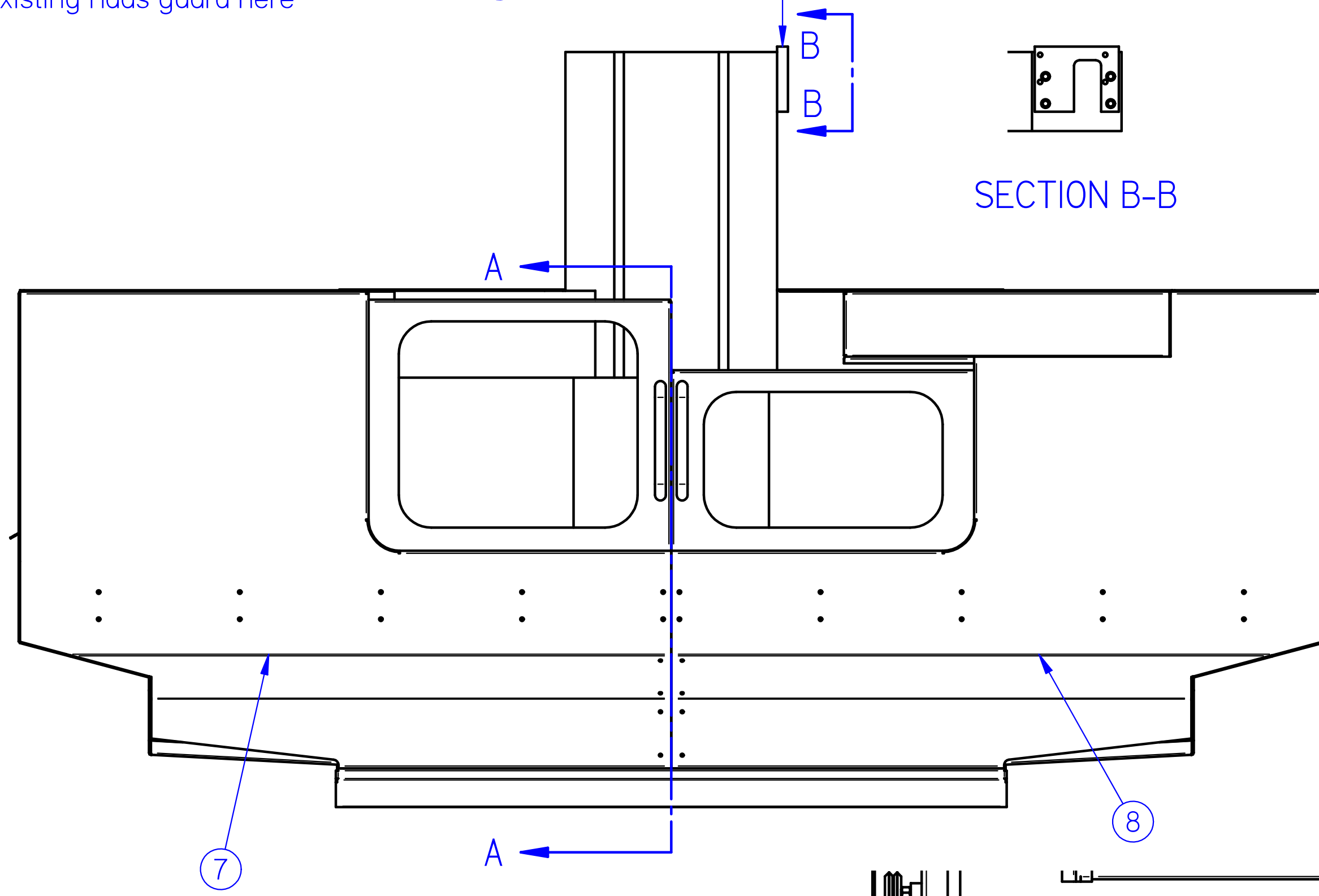
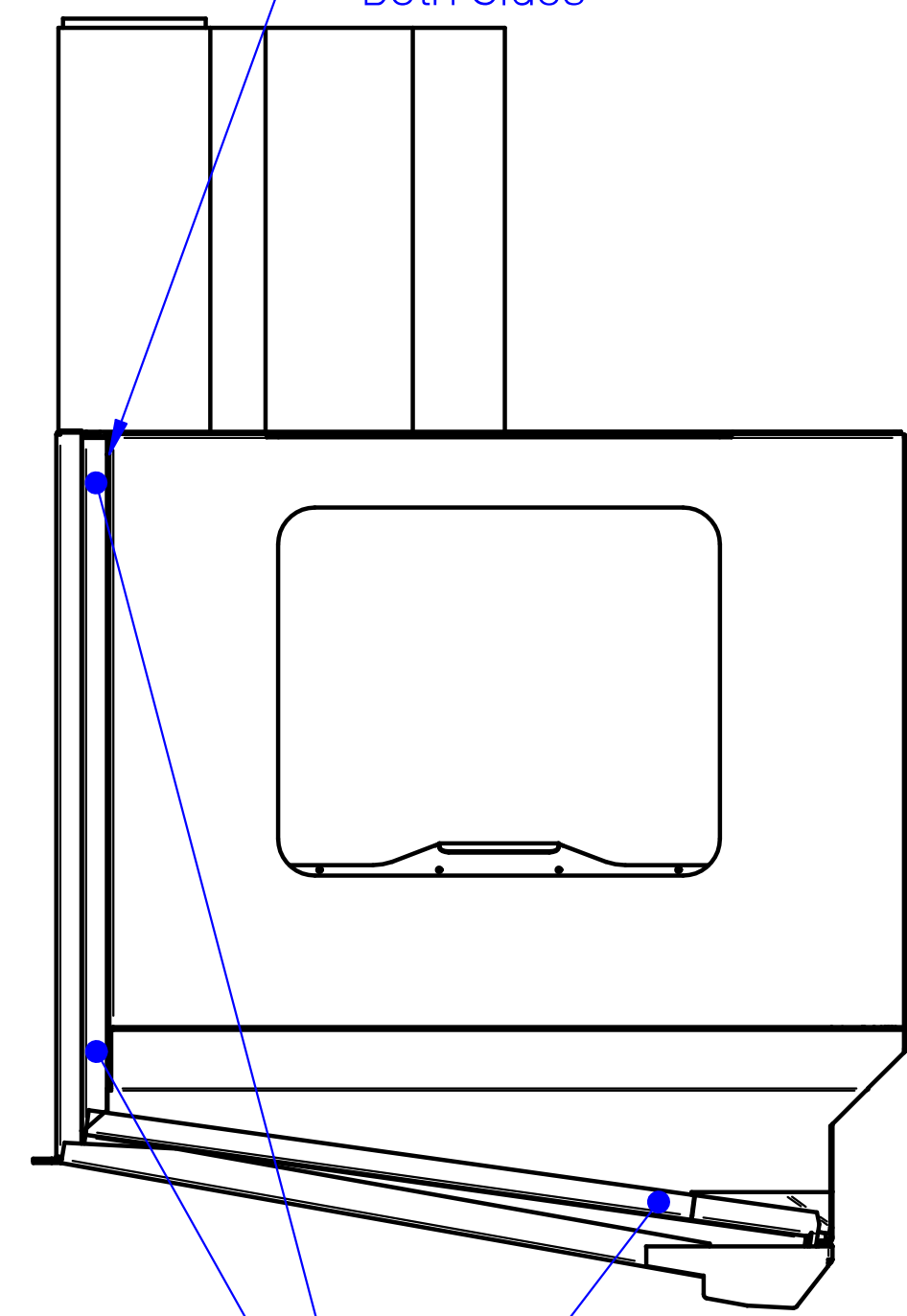


REVISION HISTORY			
REV	DESCRIPTION	DATE	APPROVED

Top installs under existing Haas guard here
 Drill thru top plate & existing Haas guard & install 1/4-20 x 5/8 BHCS Typical 2 Places



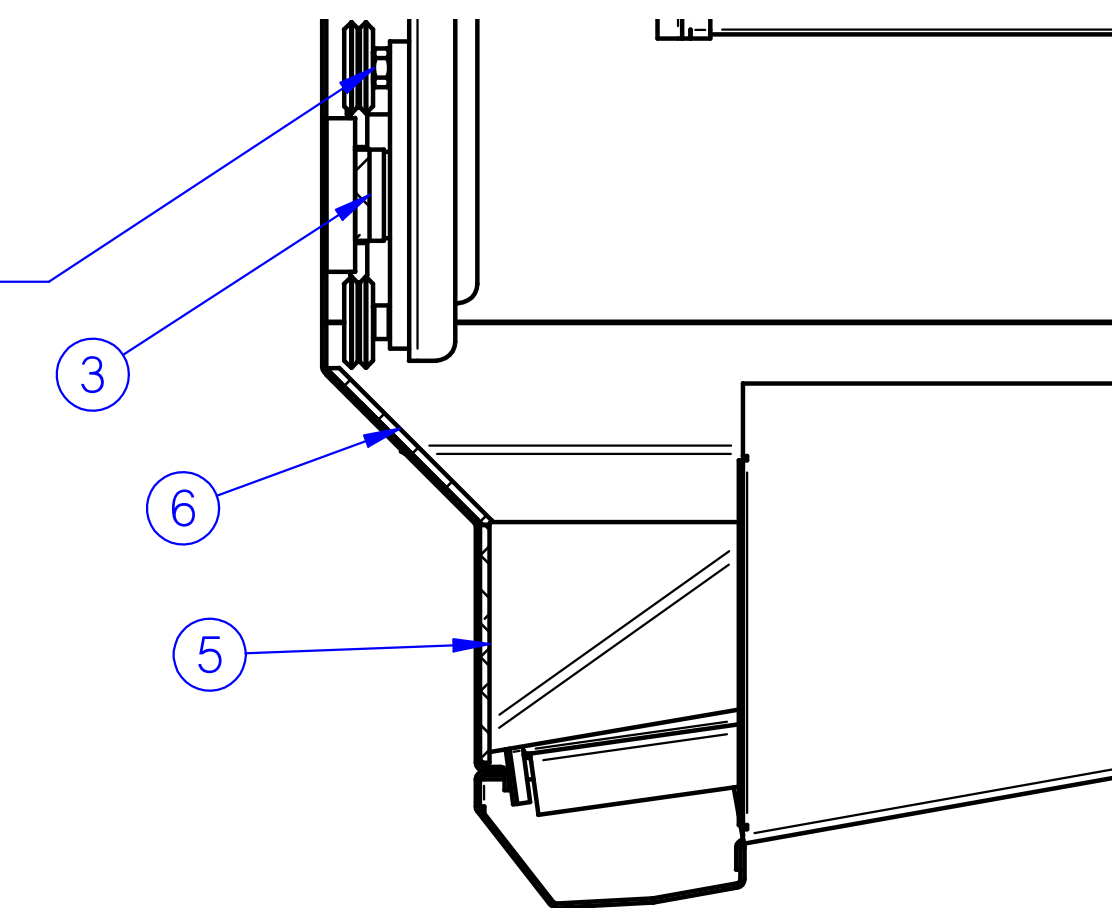
Install Enclosure Assembly inside existing Haas guard here Both Sides



SECTION B-B

Drill thru enclosure & existing Haas pan & install 1/4-20 x 5/8 BHCS Typical Both Sides

Note: Upper door wheels are installed with eccentric bushings and can be adjusted if desired




SECTION A-A

INSTALLATION PROCEDURE

1. Install Arm Riser Bracket (Item 4) Note: Raises pendant 2 inches
 - Unbolt existing pendant arm using hoist to support weight
 - Install bracket as shown utilizing (4) 1/2-13 x 1 1/4 SHCS
 - Reinstall pendant arm to bracket - be sure arm is level
2. Remove top panels (Items 1 & 2) from assemblies
3. Set Enclosure LH Assembly (Item 7) onto existing Haas pan
4. Set Enclosure RH Assembly (Item 8) onto existing Haas pan
5. Assemble LH & RH Assemblies together using items 3, 5 & 6
6. Align Enclosure to existing Haas pan
7. Drill and bolt enclosure to existing Haas pan using 1/4-20 x 5/8 button head cap screws - 3 places each side
8. Reinstall top plates (Items 1 & 2) onto enclosure
9. Drill and install 1/4-20 x 5/8 button head cap screws thru existing Haas guard and top plate - 2 places each side
10. Apply silicone sealant to all seams as required to seal all leaks (Not Included)

Item #	Drawing Number	Description	Qty.
1	7196-018	LH Top Plate	1
2	7196-019	RH Top Plate	1
3	7196-026	Mount Tie Plate	1
4	7196-038	Monitor Spacer	1
5	7196-039	Lower Cross Plate	1
6	7196-040	Top Cross Plate	1
7	Enclosure LH Ass'y	Haas Enclosure Ass'y	1
8	Enclosure RH Ass'y	Haas Enclosure Ass'y	1

Qty. Req'd: 1
 Material:
 Finish:
 Heat Treat:
 Stamp Part: 7196 Layout

TOLERANCE UNLESS OTHERWISE SPECIFIED ± 1/16 ± 0.02 ± 0.005 ± 0.0005 ± 0"	 ARNOLD MACHINE INC. <small>100 ALBERTA DRIVE TULSA, OK 74103 405-443-1878 FAX 405-443-1828</small>		Customer: Arnold Machine Inc.	Sheet
				1 OF 1
Drawn By: Paul	Date: 11/18/2008	Project Name: Full Enclosure for Haas TM2	Rev	
Job #: 7196	Drawing #: 7196 Layout	Description: Final Assembly	Size	D